



3/8" DRIVE SHALLOW SOCKETS, 12 POINT, METRIC

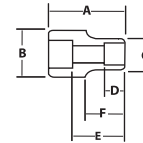
High-Polished Chrome Finish

Product Code	Size (MM)	A OAL (Inches)	B Drive End Diameter (Inches)	C Working End Diameter (Inches)	D Broach Depth (Inches)	E Bolt Clearance Depth (Inches)	F Bolt Clearance Diameter (Inches)	Nose Length (Inches)
BM-1206	6	1 1/32	1 1/16	1 3/32	7/32	9/16	7/32	17/32
BM-1207	7	1 1/32	1 1/16	1 9/32	7/32	9/16	7/32	17/32
BM-1208	8	1 1/32	1 1/16	1 9/32	1/4	9/16	9/32	17/32
BM-1209	9	1 1/32	1 1/16	1 1/2	9/32	9/16	1 1/32	17/32
BM-1210	10	1 1/32	1 1/16	1 9/16	9/32	9/16	1 1/32	17/32
BM-1211	11	1 1/32	1 1/16	1 5/8	9/32	9/16	1 1/32	17/32
BM-1212	12	1 1/32	1 1/16	1 21/32	1 1/32	9/16	1 1/32	17/32
BM-1213	13	1 1/32	2 9/32	2 9/32	1 1/32	9/16	3/8	-
BM-1214	14	1 1/32	2 5/32	2 5/32	7/16	17/32	17/32	-
BM-1215	15	1 9/32	1 9/16	1 9/16	1 9/32	1 9/32	9/16	-
BM-1216	16	1 1/8	2 1/32	2 1/32	1 9/32	5/8	1 9/32	-
BM-1217	17	1 5/32	2 9/32	2 9/32	5/8	5/8	5/8	-
BM-1218	18	1 9/32	3 1/32	3 1/32	5/8	2 1/32	1 1/16	-
BM-1219	19	1 3/16	1	1	2 1/32	1 1/16	2 3/32	-
BM-1220	20	1 7/32	1 1/32	1 1/32	1 1/16	2 3/32	3/4	-
BM-1221	21	1 1/4	1 1/8	1 1/8	2 3/32	2 3/32	3/16	-
BM-1222	22	1 9/32	1 5/32	1 5/32	3/4	3/4	3/16	-
BM-1223	23	1 5/16	1 3/16	1 3/16	3/4	2 9/32	7/8	-
BM-1224	24	1 3/8	1 1/4	1 1/4	1 9/16	2 7/32	7/8	-
BM-1226	26	1 7/16	1 1 1/32	1 1 1/32	2 7/32	7/8	1 5/16	-

Fed. Spec: ANSI B107.5



BM-1212 BM-1206



MSB-12RC 12 Piece 3/8" Drive Shallow 12 Point Socket Set on Clip Rail

Contents Include:

Product Code	Size (MM)	Product Code	Size (MM)	Product Code	Size (MM)
BM-1208	8	BM-1212	12	BM-1216	16
BM-1209	9	BM-1213	13	BM-1217	17
BM-1210	10	BM-1214	14	BM-1218	18
BM-1211	11	BM-1215	15	BM-1219	19

MSB-17RC 17 Piece 3/8" Drive Shallow 12 Point Socket Set on Clip Rail

Contents Include:

Product Code	Size (MM)	Product Code	Size (MM)	Product Code	Size (MM)	Product Code	Size (MM)
BM-1206	6	BM-1211	11	BM-1216	16	BM-1221	21
BM-1207	7	BM-1212	12	BM-1217	17	BM-1222	22
BM-1208	8	BM-1213	13	BM-1218	18		
BM-1209	9	BM-1214	14	BM-1219	19		
BM-1210	10	BM-1215	15	BM-1220	20		



MSB-12RC

MSB-20RC 20 Piece 3/8" Drive Shallow 12 Point Socket Set on Clip Rail

Contents Include:

Product Code	Size (MM)	Product Code	Size (MM)	Product Code	Size (MM)	Product Code	Size (MM)
BM-1206	6	BM-1211	11	BM-1216	16	BM-1221	21
BM-1207	7	BM-1212	12	BM-1217	17	BM-1222	22
BM-1208	8	BM-1213	13	BM-1218	18	BM-1223	23
BM-1209	9	BM-1214	14	BM-1219	19	BM-1224	24
BM-1210	10	BM-1215	15	BM-1220	20	BM-1226	26



MSB-20RC

Features

- SUPERTORQUE[®] lobular openings for greater turning power without deforming the fastener.
- Designed for quick engagement on both 6 and 12 point fasteners.



MSB-20RC

